



DieTronic
lubrication system

***OPERATING
AND
MAINTENANCE
INSTRUCTIONS

DROP SYSTEM***

DIETRONIC s.r.l.
Via Madre Teresa di Calcutta, 9/13
26866 - Sant'Angelo Lodigiano,
Tel: +39 0371 210129 – Fax: +39 0371 214321.
info@dietronic.eu - www.dietronic.eu
P.IVA 04298080963

INDEX

| | | |
|-----|---|---|
| 1. | GENERAL INFORMATION | 3 |
| 1.1 | GENERAL NOTES AT DELIVERY | 3 |
| 1.2 | WARNINGS | 3 |
| 1.3 | IDENTIFICATION OF PRODUCER | 3 |
| 1.4 | IDENTIFICATION OF MACHINE | 3 |
| 1.5 | REQUEST FOR INTERVENTION AND ASSISTANCE | 3 |
| 1.6 | WARRANTY | 3 |
| 1.7 | SAFETY REQUIREMENTS | 4 |
| 2. | DESCRIPTION OF THE MACHINE | 6 |
| 2.1 | SPRAY LUBRICATOR | 6 |
| 3. | INSTALLATION | 8 |
| 3.1 | POSITIONING AND MOUNTING | 8 |
| 3.2 | CONNECTION TO THE POWER SUPPLY (ONLY FOR MACHINE WITH PREDISPOSITION) | 8 |
| 4. | MAINTENANCE | 8 |
| 4.1 | MAINTENANCE OF THE MACHINE | 8 |
| 5. | ELECTRIC AND PNEUMATIC DRAWING | 8 |

1. GENERAL INFORMATION

1.1 General notes at delivery

To check at receipt of machine:

- The delivery match to order
- Without damages

In case of damages or missing pieces, please inform immediately Dietronic Srl, indicating all possible details.

The catalogs and designs in this instructions are to considerate as general reference and doesn't have necessarily all technical details.

1.2 Warnings

Parts of the instructions, written in bod, refers to warning signals, and shows proceedings, if partially or total not observed, can cause injuries at the operator. This instruction is strictly reservated to the client in possession of the machine. The information in this instruction can be amended without previous notice.

The documents delivered with this machine, included this instruction, are in the property of Dietronic s.r.l., who reserve all rights.

This instruction, total or partial or attachments, can be reproduced in any way without permissione from Dietronic s.r.l.

1.3 Identification of producer

Dietronic s.r.l.

Via Madre Teresa di Calcutta, 9/13

26866 - Sant'Angelo Lodigiano (LO) -Italia

1.4 Identification of machine

| | |
|--------------|----------------------|
| SERIES | EPC SERIES |
| MODEL | EPC SERIES PUNTO TOX |
| REGISTRATION | 2022852 |
| YEAR BUILT | 2022 |

1.5 Request for intervention and assistance

Dietronic s.r.l.

Via Madre Teresa di Calcutta, 9/13

26866 - Sant'Angelo Lodigiano (LO) -Italia

Tel +39 0371 210129

Fax +39 0371 214321

e-mail: info@dietronic.eu

www.dietronic.eu

1.6 Warranty

The supplied machine is granted for 24 month of delivery date. This garanty, regards vices and defects arising from material, construction or lavoration, is conditioned at the denounce within 8 days of finding, excluding vices and defects witch depends on not observing the instructions supplied, not adequate or bad using, overexploitation of machienery, tempering, changes or repairs made by the purchaser and using oils, cleaners or other inappropriate products. The garanty is substantiated and runs ourt with free replacement, ex works. The labor costs (disassembly and reassambly or other), shipping and handling are charged to the buyer in connection to the risks noted. With the present he abdicate all clams for damages to persons or things wich are result of the above mentioned vices and defects. The buyer enyoj only the garanty of subcontractors of the seller for damages at electric machines,

OPERATING INSTRUCTIONS AND MAINTENANCE - DROP SYSTEM

This document is the property DieTronic Ltd. and can not be reproduced or given to third parties without our authorization

electric motors, ball bearings, manometers, seals, chains and other pieces not changed directly by the seller and give up for every time all claims for damages that may occur also in the period of warranty. The pieces changed in warranty does not extend time of initial warranty in any way and for any reason which becomes effective – as mentioned above - with date of delivery of the complete machine.

1.7 Safety requirements

- The terms used in this instruction for localize the different components of the machine, for example right, left, per esempio, destro, sinistro, superior, inferior, and so on, always refer to the correct position of the operator during the normal course of work. (in front of the machine).
- Before starting up the machine, the operator has to read the present instruction and have acquired a deep knowledge of specific techniques and machine controls.
- It's recommended that the operator follows a period of training regarding the use of the machine.
- Before installing the machine, check that the area used is compatible with the overall dimensions of the same.
- Do not allow unauthorized and qualified personnel to operate, adjust, or to conduct repairs. Refer also to this manual for appropriate action.
- Before cleaning and / or maintenance of the machine and before removing any protection, make sure the switch is OFF, so as to remove all electrical power to the machine during the intervention.
- The power system must be equipped with an automatic release system upstream of the overall machine and a suitable system grounding that meets all the requirements of industrial standards for the prevention of accidents.
- If you need to take action on the general breaker or in its vicinity, slacken the line to which the switch is connected.
- The moving parts (rollers and gate protection) of the machine does not stop immediately after shut down itself. It is recommended that, before working on the machine, make sure that all moving parts have stopped.
- All inspections and maintenance operations that require the removal of protective security are carried out under the full responsibility of the operator. It is therefore recommended to perform these operations by a qualified and authorized technician.
- Check that all safety devices security (fences, protections, guards, switches, etc.) have not been tampered with and that are fully functional before operating, otherwise arrange for their accommodation. Do not remove safety devices.
- Do not tamper with the electrical system, the tire or any other mechanism for any reason
- Not getting groped or override the machine while is running.
- Do not wear rings, watches, jewelry, torn clothing or baggy such as ties, shoes, unbuttoned jackets or any thing who can entangled in moving parts. Wear, however, approved clothing for accident prevention such as, for example, hard hats, sturdy shoes, gloves, ear muffs, safety glasses when necessary.
- Do not wear clothing with sleeves at work and particularly during cleaning operations
- In the case of repairs you have to ensure that there are:
 - No moving parts that can come into operation;
 - No unstable pieces located on the machine or in its vicinity;
 - In each case, fix them on the top with a suitable locking.
- Do not use your hands instead of adequate tools to operate the machine
- Don't use the hands or other objects to stop moving parts.
- Pay close attention to the labels on the machine every time you preparing to operate on the same or nearby.
- And 'you are obliged to keep all the tags readable by changing, if necessary, the position in order to ensure complete visibility to the operator.
- The user is also obliged to replace all the tags for whatever reason, have deteriorated or are not clearly visible, requiring new ones to parts service DIETRONIC SRL

- If not expressly specified herein, avoid to repair or adjust the machine or part of it when the same, or part thereof, is in operation, in order to avoid being pinched by moving parts.
- In the case of machine malfunctions or damage to the components please contact responsible for maintaining, without proceeding with further repairs.
- E 'is strictly forbidden to use the machine for purposes other than those provided and documented. The use of the machine must always be in the manner, times and places designated by the standards of good practice, the laws of every nation in the country although there were are no specific rules to regulate the specific industry.

DIETRONIC disclaims any liability for any accidents or damage to persons or property caused by failure to comply with the requirements for both safety standards listed below. These requirements, together with requirements for installation of the machine and the electrical connections are, moreover, an integral part of the Industrial Accident Prevention regulations of each country. These safety standards complement and not replace the safety rules in force locally. NEVER try to rush or emergency repairs that may affect the proper operation of the machine. IF IN DOUBT, ALWAYS ASK THE INTERVENTION OF A TRAINED. ANY ALTERATION BY THE MANUFACTURER'S RISE TO ANY LIABILITY 'AND MAKES THE' USER RESPONSIBLE TO THE SAME BODIES RESPONSIBLE FOR THE PREVENTION OF ACCIDENTS.

2. DESCRIPTION OF THE MACHINE

Principle of operation

A pneumatic pump pressurizes the oil circuit by drawing from the tank. The pressurized oil in the hydraulic system is dosed through the extrusion MV.

The quantity of oil, adjusted through the rear screw of the valve spray, mixed with the atomizing air determines the uniform application of lubricant on the sheet.

2.1 **Spray lubricator**

The drop system is composed of:

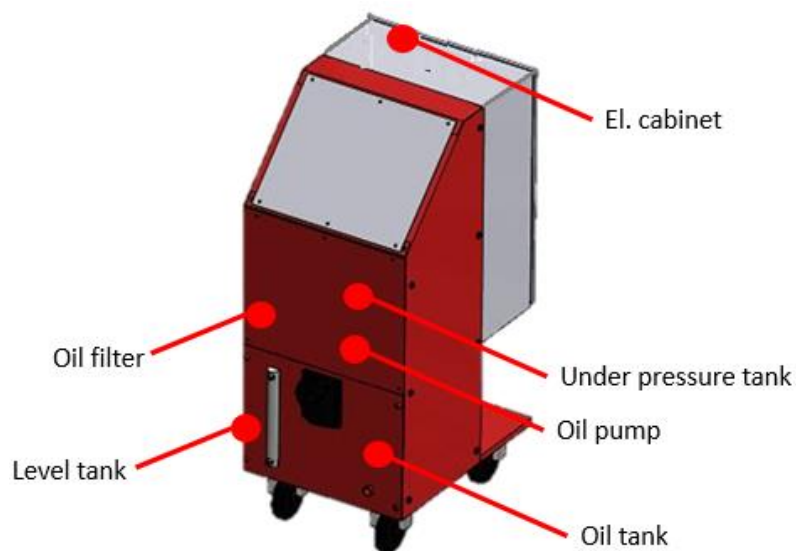
Tank for lubricant

The tank is constituted by a tank of 40 liter capacity.

Each tank is equipped with:

| | |
|----------------------|-----------------|
| Viewer oil level | cod.HCX.254-M12 |
| Minimum level sensor | cod.LMD1 |
| Oil filter | cod.ESB11 |

Each bowl is equipped with a manual valve for emptying it by free fall.



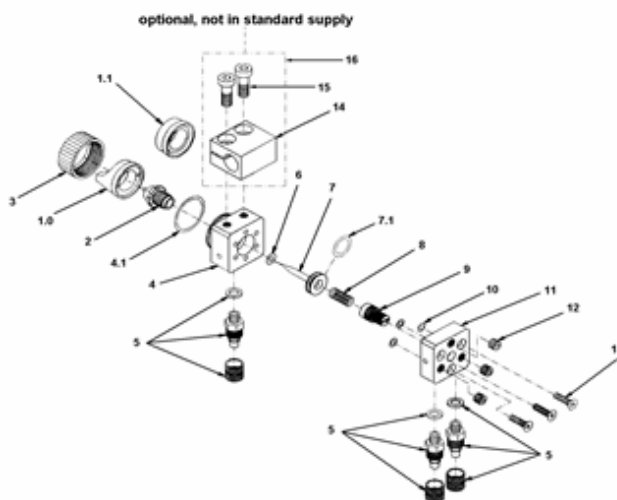
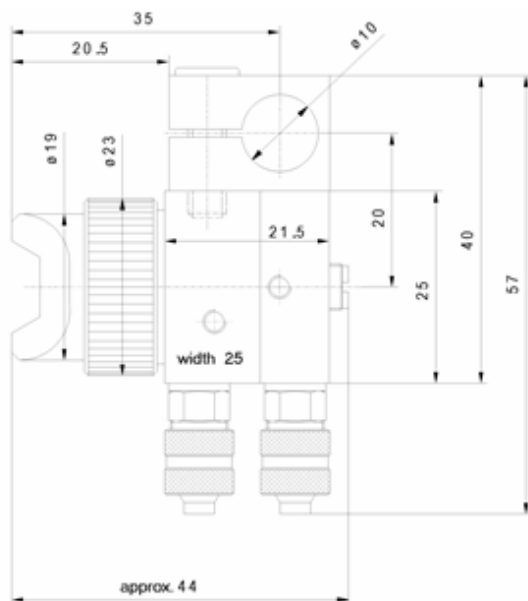
The under-pressure kit

The plant is equipped with two under pressure kits compounds from an oil filter, a 3way valve controlled by a solenoid valve and a pressure tank (automatically reloaded by the pump).

The pressure is adjustable by a pressure regulator located on the plate of housing of the under-pressure kit.

The plant is equipped with one under pressure kit rechargeable manually.

Spray nozzles



| Drawing | Code | Q.ty | Description |
|---------|--------|------|-----------------------------------|
| 1.0 | * | 1 | hat air flat spray |
| 1.1 | * | 1 | hat air round spray |
| 2 | * | 1 | needle in stainless steel |
| 3 | 410028 | 1 | o-ring |
| 4 | 510027 | 1 | body in stainless steel |
| 4.1 | 640006 | 1 | o-ring |
| 5 | 220089 | 3 | fitting M5 |
| 6 | 640026 | 1 | o-ring |
| 7 | * | 1 | needle in stainless steel |
| 7.1 | 640366 | 1 | o-ring |
| 8 | 820017 | 1 | spring ago |
| 9 | 610090 | 1 | adjustment screw |
| 10 | 640000 | 3 | o-ring |
| 11 | 510028 | 1 | blanking plate in stainless steel |
| 12 | 610021 | 3 | locking screw |
| 13 | 610052 | 3 | mounting screw |
| 14 | 910014 | 1 | clamp |
| 15 | 610042 | 2 | mounting screw |
| 16 | 910015 | 1 | complete clamp |

Hose connection

Connect hoses for atomizing air and control air separately to control valves (pressure reducers and solenoids). Then fluid hose to material pressure tank or other means of feeding as under:

- atomizing air Z → to 2/2 way solenoid
- control air S → to 3/2 way solenoid
- fluid M → to feeding device

3. INSTALLATION

3.1 Positioning and mounting

The installation of the machine must be carried out by qualified personnel.

Locate a suitable location for the installation of the machine.

Verify that the selected position there are adequate free spaces, in order to allow the use and the maintenance in conditions of safety.

3.2 Connection to the power supply (only for machine with predisposition)

Verify that the supply voltage indicated on the plate is equal to that network.

Connect the power cable using the interface arranged in boxes of derivation placed on the plates of the under-pressure kit (+24 V).

DIETRONIC disclaims any liability arising from an electrical connection does not match the industry standards for the prevention of accidents.

4. MAINTENANCE

ATTENTION: STOP THE MACHINE

Before starting the maintenance procedure to do the following.

Make sure that the tap has been tightened air supply

Wear all personal protective equipment prescribed by the regulations in force concerning safety at work.

The maintenance operations must be performed by individuals who are aware of the maintenance procedures and precautions to be taken.

4.1 Maintenance of the machine

- Keep clean, with a periodicity of 2 months, the tanks lubricant reservoir.
- Keep clean, with a periodicity of 6 months, the spray nozzles
- Replace the membranes pump with 1 year periodicity
- Replace the oil filter fitted inside the tank and the filter product with a periodicity of 6 months.

5. ELECTRIC AND PNEUMATIC DRAWING

See attached